

# 1-L LINK SUPPORT

## THE 1-L LINK SUPPORT

is designed for installation of several small radio links or one large link up to Ø3,0 m (10 ft) with strut support. The 1-L link support can be installed on masts as well as conical towers.

## FLEXIBILITY

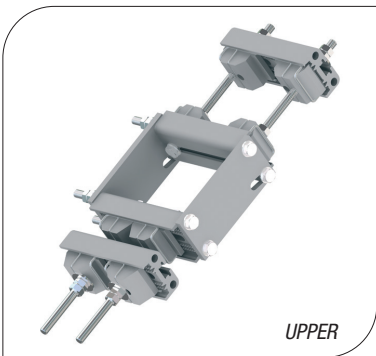
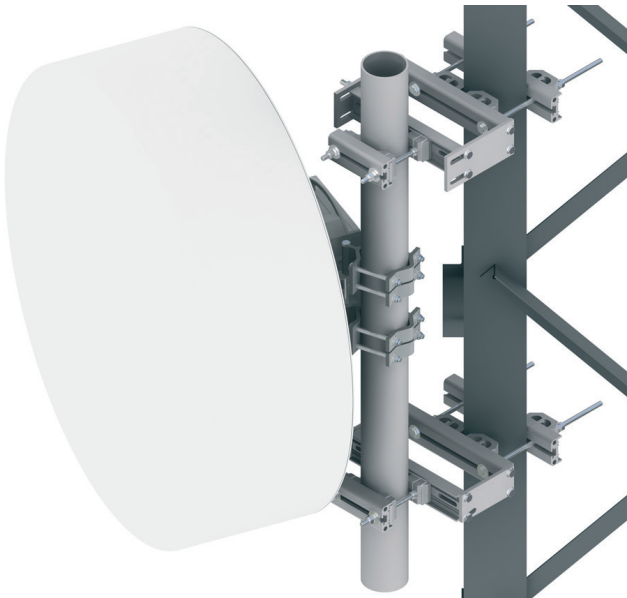
The 1-Leg link support can handle a wide range of all common frame leg designs, round, square, angular, etc. Thanks to the flexibility of the Cue Dee clamp 270. The oblong holes on the upper extension arms allow the support to compensate for inclined towers.

## QUALITY

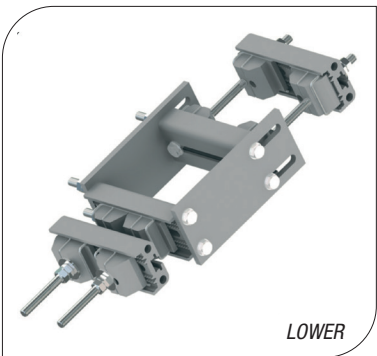
All components are made of anodized aluminium and stainless steel which gives the support excellent corrosion resistance.

## EASY ASSEMBLY

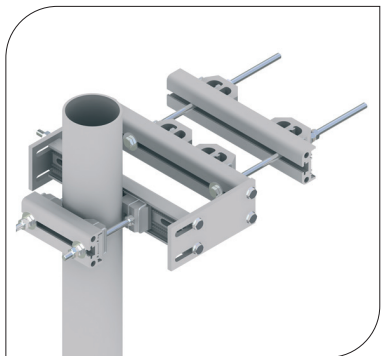
The choice of materials makes the product very light which makes the handling and installation very easy.



UPPER



LOWER



## ORDER AND TECHNICAL INFORMATION

DRAWING NO: CD 184224

FUNCTION DESCRIPTION: Clamp kit in two levels, with space for 1 mounting tube.  
Typical for installation of large radio links or several small ones or other common telecom equipment.

MOUNTING SPAN:	TUBES:	SQUARE PROFILES:	90° ANGLE:	60° ANGLE:
	○	□	∨	∨
Minimum	Ø25 mm (1,0 in)	60 x 60 mm (2,4 x 2,4 in)	60 x 60 mm (2,4 x 2,4 in)	65 mm (2,6 in) opening
Maximum	Ø270 mm (10,6 in)	210 x 210 mm (8,3 x 8,3 in)	220 x 220 mm (8,7 x 8,7 in)	310 mm (12,2 in) opening
Mounting tube	Ø25-120 (1,0-4,7 in) (Recommended Ø114 mm (4,5 in), see page 90-91).			

PACKAGE DIMENSIONS:	LENGTH:	WIDTH:	HEIGHT:	WEIGHT:
	540 mm (21 in)	175 mm (6,9 in)	180 mm (7,1 in)	23 kg (51 lb)

**NOTE!** Mounting tubes are not included. Must be ordered separately